



## REGIONAL SPECIALISED METEOROLOGICAL CENTRE -TROPICAL CYCLONES, NEW DELHI TROPICAL WEATHER OUTLOOK

**DEMS-RSMC TROPICAL CYCLONES NEW DELHI DATED 29.06.2025**

**TROPICAL WEATHER OUTLOOK FOR THE NORTH INDIAN OCEAN (THE BAY OF BENGAL AND THE ARABIAN SEA) VALID FOR THE NEXT 168 HOURS ISSUED AT 0600 UTC OF 29.06.2025 BASED ON 0300 UTC OF 29.06.2025.**

### **BAY OF BENGAL:**

Under the influence of yesterday's upper-air cyclonic circulation over southwest Bangladesh & adjoining Gangetic West Bengal, a low-pressure area formed over Northwest Bay of Bengal and adjoining West Bengal and Bangladesh coasts at 0000 UTC and persisted over the same region at 0300 UTC of today, the 29th June 2025. The associated cyclonic circulation extended upto 7.6 km above mean sea level. It is likely to move slowly west-northwestwards across North Odisha, Gangetic West Bengal & Jharkhand during next 2 days.

Scattered to broken low and medium clouds with embedded intense to very intense convection lay over Bay of Bengal and north Andaman Sea. Scattered low and medium clouds with embedded moderate to intense convection lay over south Andaman Sea.

### **\*PROBABILITY OF CYCLOGENESIS (FORMATION OF DEPRESSION) DURING NEXT 168 HRS:**

24 HOURS	24-48 HOURS	48-72 HOURS	72-96 HOURS	96-120 HOURS	120-144 HOURS	144-168 HOURS
NIL	NIL	NIL	NIL	NIL	NIL	NIL

**\*NOTE: EVERY 24HR FORECAST IS VALID UPTO 0300 UTC (0830 IST) OF NEXT DAY**

### **ARABIAN SEA:**

Yesterday's low-pressure area over Kutch and neighbourhood lay over Saurashtra & Kutch and adjoining south Rajasthan at 0000 UTC and became less marked at 0300 UTC of today, the 29th June, 2025. However, the associated upper air cyclonic circulation lay over south Rajasthan and adjoining north Gujarat extending between 3.1 and 7.6 km above mean sea levels.

A fresh upper air cyclonic circulation lay over central parts of north Arabian Sea extending upto 5.8 km above mean sea level.

Scattered to broken low and medium clouds with embedded intense to very intense convection lay over northwest Arabian Sea. Scattered low and medium clouds with embedded moderate to intense convection lay over the rest of the Arabian Sea, Lakshadweep Islands area, Maldives and Comorin area.

### **\*PROBABILITY OF CYCLOGENESIS (FORMATION OF DEPRESSION) DURING NEXT 168 HRS:**

24 HOURS	24-48 HOURS	48-72 HOURS	72-96 HOURS	96-120 HOURS	120-144 HOURS	144-168 HOURS
NIL	NIL	NIL	NIL	NIL	NIL	NIL

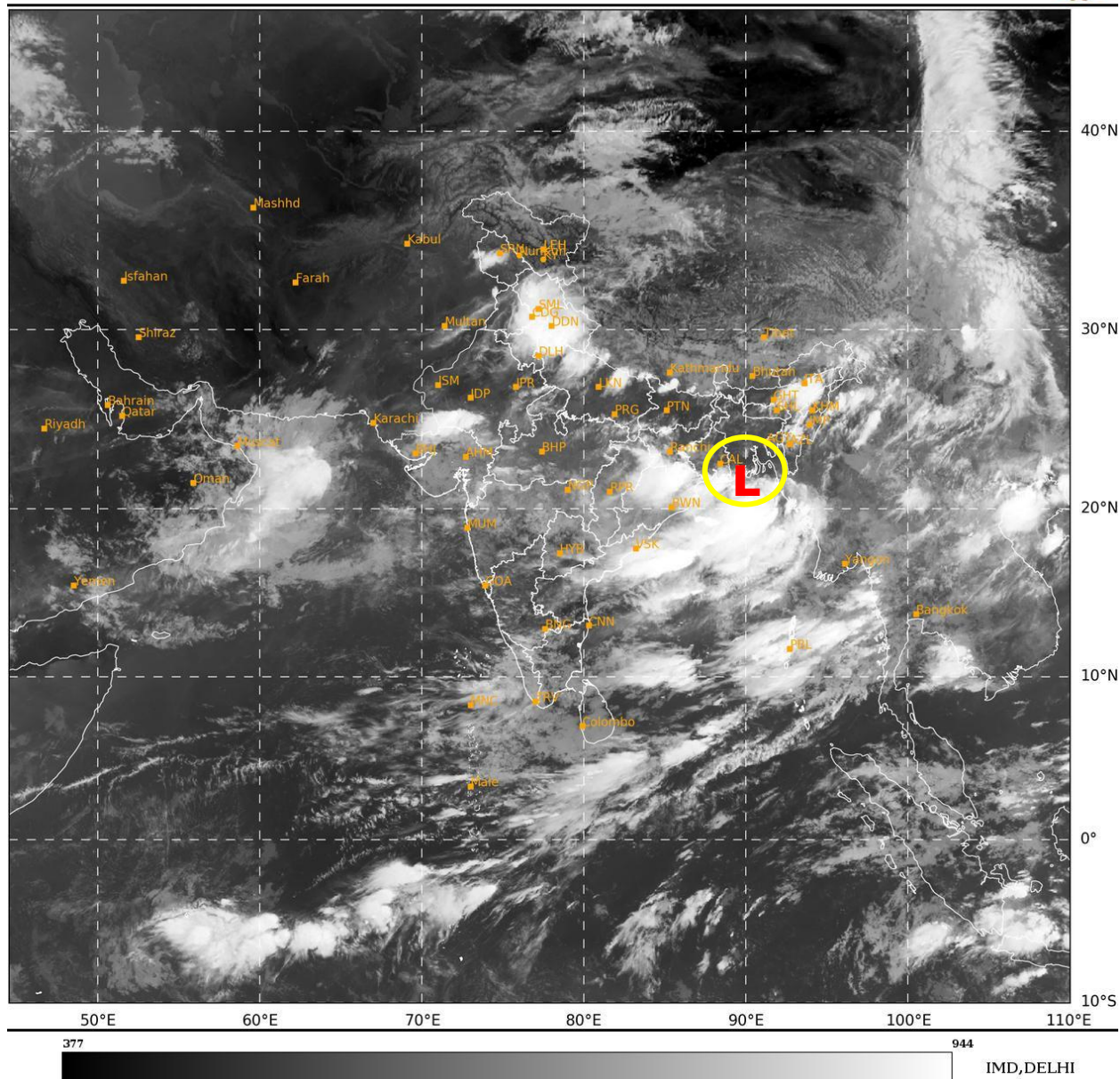
**\*NOTE: EVERY 24HR FORECAST IS VALID UPTO 0300 UTC (0830 IST) OF NEXT DAY**

**REMARKS: NIL**

Cloud distribution: (a) Isolated: <25%, Scattered:25-50%, Broken: 51-75%, Solid:>75%, Convection Intensity: (a) Weak: Cloud Top Temperature(CTT)>-25°C,(b)Moderate:CTT:-25°Cto-40°C,(c)Intense:CTT: -41°Cto -70°Cand(d)Very Intense::Less than -70°C  
PROBABILITYOFCYCLOGENESIS(FORMATIONOFDEPRESSION):NIL:0%,LOW:1-33%,MODERATE:34-66%ANDHIGH:67-100%  
ThisisaguidanceBulletinforWMO/ESCAPPanelMembercountries.VisitrespectiveNationalwebsitesforCountryspecificBulletins

SAT : INSAT-3DR IMG  
IMG\_TIR1 10.8 um  
L1C Mercator

29-06-2025/(0315 to 0342) GMT  
29-06-2025/(0845 to 0912) IST



**L: Low pressure Area**

Cloud distribution: (a) Isolated: <25%, Scattered:25-50%, Broken: 51-75%, Solid:>75%, Convection Intensity: (a) Weak: Cloud Top Temperature(CTT)>-25°C,(b)Moderate:CTT:-25°Cto-40°C,(c)Intense:CTT: -41°Cto -70°Cand(d)Very Intense::Less than -70°C  
PROBABILITYOFCYCLOGENESIS(FORMATIONOFDEPRESSION):NIL:0%,LOW:1-33%,MODERATE:34-66%ANDHIGH:67-100%  
ThisisaguidanceBulletinforWMO/ESCAPPanelMembercountries.VisitrespectiveNationalwebsitesforCountryspecificBulletins